



BTB-01

Bass/Treble/Bright Stack

The BTB-01 is based on the middle stack of the J-Retro 01 bass preamp. It consists of a single dual concentric knob stack with controls for BASS, TREBLE and BRIGHT function.

- **BASS & TREBLE Stack**

- **TREBLE (+12dB @ 3 kHz, -12dB @ 1kHz)**

The upper knob is the Treble control with boost and cut. The central 'flat' position is indented. The cut settings work on lower frequencies compared to boost to give a deeper sound when the top is rolled off.

- **BRIGHT (+8dB @ 7kHz)**

Pull the Treble knob for the Bright setting.

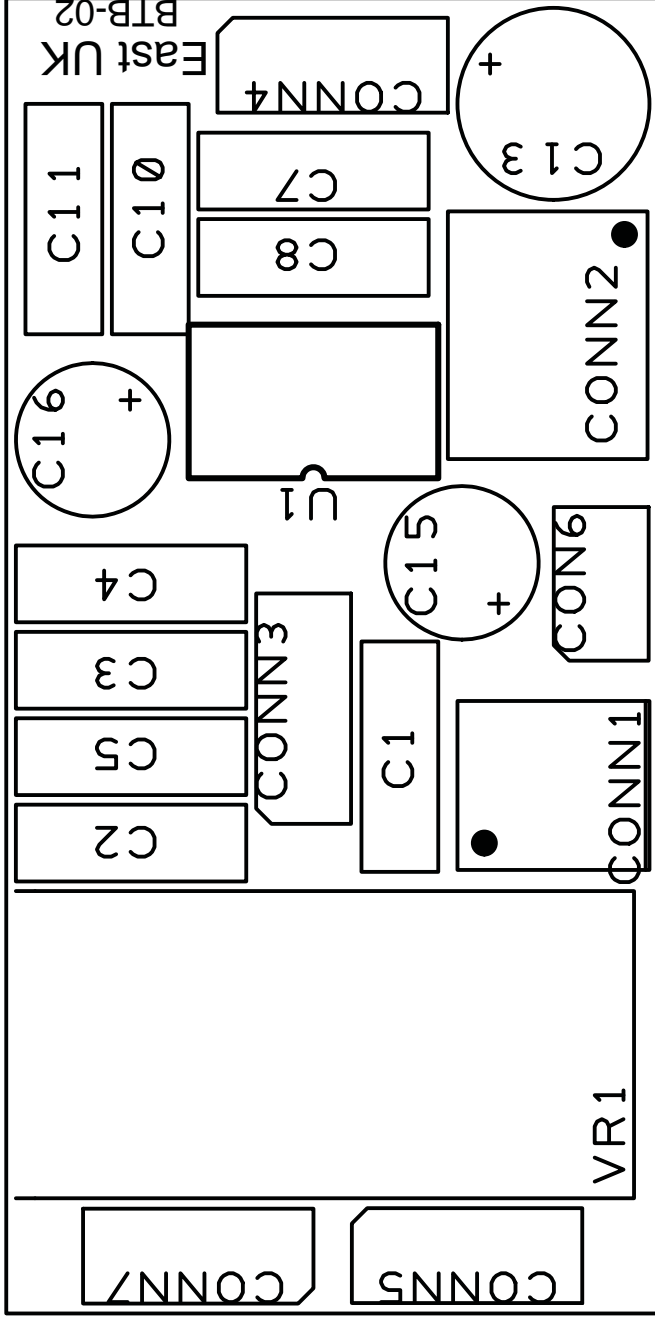
- **BASS (+15dB @ 50Hz)**

The lower outer knob is the boost only Bass control. The frequency band of boost gets progressively lower as the boost is increased. An indent midway is included to aid the setting of this control.

- **POWER**

This unit can powered from 9 - 18 Volts DC.

BTB-02



BTB-02
East UK

GREEN - GND
ORANGE - O/P
RED - 9-18V +VE

HOT COLD
PICKUP



CARE & SAFETY

- This unit does not contain any user-servicable parts. Any repairs or maintenance should be carried out by qualified personnel only.
- Do not allow this unit to get wet or expose it to damp conditions.
- Do not leave a battery connected to the unit for extended periods if not in use.

GUARANTEE

Your East product is guaranteed to be free from defects in materials and workmanship for a period of one year from the date of original purchase.

If during the guarantee period your product becomes faulty due to defective materials or workmanship then the unit will be repaired or replaced without charge for parts or labour at the discretion of East UK according to the conditions below.

CONDITIONS

- 1 The original sales invoice or receipt indicating the date of purchase and sales outlet is presented together with the faulty unit.
- 2 The unit was installed competently consistent with the instructions supplied.
- 3 What is not covered:
 - a) Damage due to accident or improper handling, installation or operation.
 - b) Defects caused by the instrument or system to which to which the unit has been installed.
 - c) Damage resulting from repair of the unit carried out by non-authorized service personnel.
 - d) The costs of transport or shipping costs relating directly or indirectly to the guarantee of this product.